

# our place

INSPIRING YOU TO  
PROTECT GREAT PLACES



TETON REGIONAL LAND TRUST  
WINTER 2024/2025

Cover Photo  
*Kit Weitnauer*

# A Message From Our Executive Director



Dear Friends,

We recently returned from the Land Trust Alliance's annual rally, which is always an inspiring and energizing opportunity for professional development. This year, plenary speaker Kate Schapira, author and activist working to address climate anxiety, shared insights that deeply resonated with our team. She emphasized the need to take a step back, prioritize, and ask the two critical questions: What is most important to do right now? How can we collaborate with others to achieve it?

At Teton Regional Land Trust, we have experienced a year of transition, and Kate's message aligns with our approach. We first focused on building our team and ensuring we had the right staff in place. Then, we turned to our core mission: protecting the most vital landscapes. In doing so, we have strengthened partnerships in new and exciting ways.

As Kate Schapira reminded us, no one does this work alone. Our mission to protect working lands and wildlife habitat is made possible through partnerships—with landowners, Tribes, foundations, federal grants, experts in conservation, and you. Your loyal support fuels our ability to make a difference. We will continue working with our partners to ensure the best parts of this landscape are protected—forever.

In a world often overshadowed by the challenges of fires, floods, hurricanes, and other natural disasters, the Land Trust is committed to making our region more ecologically and economically resilient. Together, we are creating a legacy of hope and progress for future generations.

Thank you for standing with us. Your support is vital to everything we do.

Sincerely,

A handwritten signature in cursive that reads "Kim".

Kim Trotter  
Executive Director

## BOARD OF DIRECTORS

Bill Rogers, *President*  
Karen Rice, *Vice President*  
Bill Graham, *Treasurer, Past President*  
Ned Corkran, *Secretary*

Sarah Ashworth  
William "Brad" Bradley  
Jeff Carr  
Sandy Schultz Hessler  
Bob Lugar  
Mike Merigliano  
Paul Merrill  
Bruce J. Mincher  
John Nedrow, *Past President*  
David Pease  
Arantza Zabala, *Past President*

## STAFF LIST

**Kami Archibald**  
DIRECTOR OF  
ENGAGEMENT

**Mandy Crane**  
OUTREACH AND EVENTS  
COORDINATOR

**Nicole Cyr**  
STEWARDSHIP ASSOCIATE

**Katie Gabel-Patterson**  
FINANCE AND  
OPERATIONS MANAGER

**Lydia Hanson**  
STAFF ATTORNEY/  
CONSERVATION PROJECT  
MANAGER

**Renee Hiebert**  
CONSERVATION PROJECT  
MANAGER

**Kimberly Holmes**  
STEWARDSHIP DIRECTOR

**Anna Naylor**  
DEVELOPMENT ASSOCIATE

**Niah Pennington**  
STEWARDSHIP ASSOCIATE

**Kristy Smith**  
STEWARDSHIP ASSOCIATE

**Tamara Sperber**  
CONSERVATION DIRECTOR

**Kim Trotter**  
EXECUTIVE DIRECTOR

*If you are interested in  
joining our dynamic board,  
please email  
kimt@tetonlandtrust.org.*



# Woods Creek Fen

OPEN SPACE FOR EVERYONE



Hidden in the willows just west of Driggs, you can explore a sixty-acre public, yet wild space, managed by Teton Regional Land Trust. The Fred Mugler Outdoor Classroom on Woods Creek Fen welcomes all to appreciate the rare wetland with informational kiosks, accessible picnic table, and wildlife viewing platform. The Land Trust utilizes this property to host school groups, volunteer projects, and plant walks. In 2024, the Land Trust hosted five events on the property, and we hope to continue this trend in the future!

June was a busy month on the fen. We started with a plant ecology walk, led by Stewardship Associate Kristy Smith and board member Mike Merigliano. More than 20 people joined to look for rare plants. Later in the month, ten members of the Teton Valley chapter of the Idaho Master Naturalists joined Mandy Crane, the Land Trust's Outreach and Events Coordinator, to learn about wetland ecology. A team of six volunteers diligently cleared targeted weeds from sensitive habitats at Woods Creek Fen at the end of the month, alongside our stewardship team, as part of a larger project pulling weeds from the Teton Creek Corridor on the same day.

In July, we held a Third Thursday Walk, led by Mandy Crane and Executive Director Kim Trotter, where Land Trust members learned about the property and the Land Trust's efforts to protect wetlands in the area. Finally, in late July, Mike Merigliano and Kim Trotter welcomed the Shoshone Bannock Tribal Youth Camp onto Woods Creek Fen with 17 students and their chaperones. Not only did they explore the fen's delicate ecosystem, but it was also an opportunity for the youth to connect with their cultural heritage.

Join us next year for one of our educational events on Woods Creek Fen or visit this public space on your own.





# Trish Boyd's Legacy Through Planned Giving

For Trish Boyd, a long-time donor and dedicated volunteer at Teton Regional Land Trust, supporting the conservation of Teton Valley is a deeply personal mission. “Our passion for the outdoors, the local wildlife, like the Sandhill Cranes and swans, and the Greater Yellowstone Ecosystem, drove us to support the Land Trust,” Trish shared. After purchasing property in the valley in 1993, she and her husband fell in love with the land and its diverse wildlife. Wanting to ensure the valley’s natural beauty would be protected for future generations, the couple made the powerful decision to leave their property to the Land Trust.

Trish also values the Land Trust’s efforts to preserve the valley’s agricultural heritage. “Seeing how the Land Trust helped save a local family farm was very meaningful,” she says. “Without the Land Trust’s efforts, those generational farms might not exist today, and that, to me, is as valuable as the work they do for wildlife.”

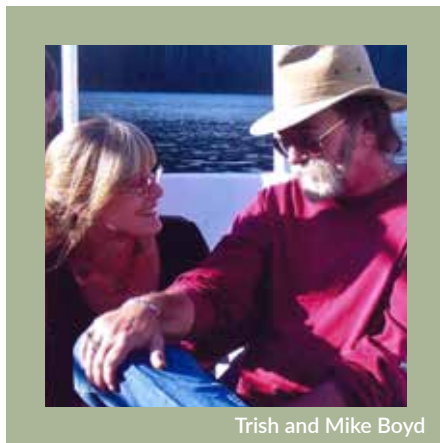
This connection to the local agricultural community allows people like Trish to ensure

that such vital relationships and landscapes are sustained for future generations. “I hope to leave a legacy of love for the land, and that people will see how the land is interconnected with our lifestyle,” she says. “Whether that’s using trails, wildlife viewing, or looking out to see fields of barley. It is to support the love of the land in all forms.”

By choosing planned giving, Trish ensures that her support for conservation will continue long after she’s gone. “We have no children, so we wanted our resources to support a cause we love,” she explained. “The Land Trust does so much more

than conserve land— they support the community, local agriculture, and a way of life.”

Planned giving lets donors leave a meaningful legacy, ensuring that their commitment to preserving eastern Idaho will have a lasting impact. It is a powerful way to protect the places and causes they cherish, far into the future. If you are interested in learning more about planned giving opportunities, please reach out to Kami at [kami@tetonlandtrust.org](mailto:kami@tetonlandtrust.org).



Trish and Mike Boyd



# Welcome To Our New Staff

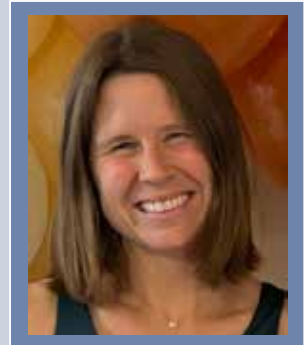
## KAMI ARCHIBALD, Director of Engagement



Kami moved to Teton Valley from Utah in 2012. Before the Land Trust, she founded Teton After School (now ABC-Above and Beyond the Classroom), an organization dedicated to providing after-school programs for children in the community. Kami holds a master's degree in Recreation Therapy and Experiential Education, bringing a rich educational background and experience in parks and recreation, nonprofit fundraising, and management. Kami's passion will guide her efforts to inspire individuals to appreciate, explore, and protect their natural surroundings. In her free time, she enjoys climbing, backpacking, snowboarding, and mountain biking, as well as spending time outside with her husband and two daughters.

## KATIE GABEL-PATTERSON, Finance and Operations Manager

Katie grew up in Florida and moved to Teton Valley in 2020 in pursuit of mountain life. She holds degrees in communications and international politics from the University of Louisville and the University of Edinburgh. She comes to the Land Trust with a background in claims management, payroll/human resources, and accounting. She spent most of her professional career in the healthcare business sector. In her free time, Katie loves waterskiing, rollerblading, and baking. She also enjoys challenging herself in the Tetons, taking every opportunity she can to learn about recreating outside.



## LYDIA HANSON, Staff Attorney/Conservation Project Manager



Lydia was born and raised in Teton Valley. After graduating from the University of Idaho, she attended law school at the American University Washington College of Law and focused heavily on environmental law. Lydia clerked for the Honorable Judge Carman in Yellowstone National Park for the District of Wyoming. She then spent two years as a private injury litigator with the Spence Law Firm. Lydia's passions for conservation and wildlife, as well as her home valley, led her to Teton Regional Land Trust. When not working, Lydia enjoys playing with her fuzzy creatures, Nordic skiing, hiking and backpacking, reading, and dancing.





PHOTO: ARTHUR HITCHCOCK

currently protecting  
**42,551**  
acres

**2,300**  
acres protected  
to date in 2024



**8**

swans  
released

# 2024 In Review



**1,318 cranes**  
counted in a single day

PHOTO: LINDA M. SWOPE



**15**  
volunteer days

**55**  
new members  
and counting

**1,897**  
people attended  
outreach events

PHOTO: KIT WEITNAUER



PHOTO: LINDA M. SWOPE

**178**  
stewardship visits



# 2023 Annual Financial Report

## STATEMENT OF FINANCIAL POSITION December 31, 2023

### CURRENT ASSETS

Cash & Cash Equivalents .....	\$2,475,156
Prepaid Expenses .....	\$10,358
Pledges Receivable, Current .....	\$250,000
Other Receivables .....	\$4,781
<b>TOTAL CURRENT ASSETS .....</b>	<b>\$2,740,295</b>

### OTHER ASSETS

Assets Held at the Idaho Community Foundation .....	\$53,871
Investment Funds for Conservation Acquisitions ..	\$8,475,380
Property Acquired for Long-term Purposes .....	\$456,540
Pledges Receivable, non-current .....	-
Right of Use Asset, net .....	\$263,381
<b>TOTAL OTHER ASSETS .....</b>	<b>\$9,249,172</b>

### PROPERTY AND EQUIPMENT

Equipment Less Accumulated Depreciation .....	\$18,832
Land Restricted for Conservation Purposes .....	\$326,279
<b>TOTAL PROPERTY &amp; EQUIPMENT .....</b>	<b>\$345,111</b>

**TOTAL ASSETS .....** \$12,334,578

### CURRENT LIABILITIES

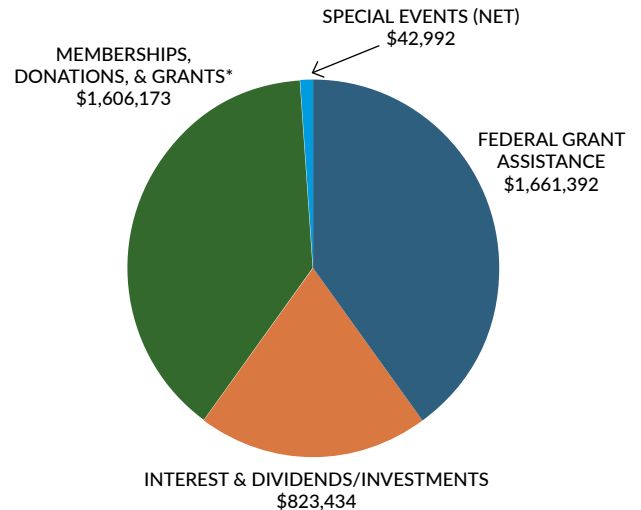
Accounts Payable .....	\$10,393
Accrued Payroll & Related Liabilities .....	\$61,058
Lease Liability .....	\$263,381
<b>TOTAL CURRENT LIABILITIES .....</b>	<b>\$334,832</b>

### NET ASSETS

Unrestricted .....	\$5,841,254
Temporarily Restricted .....	\$6,158,492
<b>TOTAL NET ASSETS .....</b>	<b>\$11,999,746</b>

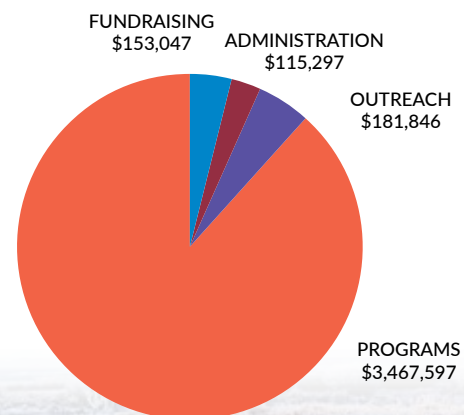
**TOTAL LIABILITIES & NET ASSETS .....** \$12,334,578

## 2023 INCOME - \$4,133,991



Teton Regional Land Trust often serves as a pass-through organization for federal, state, and private grants that solely support conservation projects. While pass-through funds do not support staff and operational costs, they are included in both the income and expense figures. In addition to operating funds, we raise private funds to leverage federal and state grants. These donations are generally leveraged 3:1 for land protection and stewardship.

## 2023 EXPENSES - \$3,917,787







## DOUBLE YOUR IMPACT THIS GIVING SEASON

This year, your generosity goes twice as far! Thanks to an anonymous donor, every eligible gift will be matched 1:1 until the end of 2024, doubling the power of your support to help us protect the beautiful landscapes, vital waterways, and working agricultural lands that define our region.



### Eligible donations for the match include:

- ▶ **Donations from new donors** — If you're giving for the first time, your gift will be doubled!
- ▶ **Increased donations** — If you're already a supporter and increase your gift, the additional amount will be matched.
- ▶ **Monthly donations** — Any new monthly subscriptions will be matched for the entire year!

By giving today, you're helping preserve these lands forever. Your support also helps provide livable wages for our dedicated staff, empowering them to protect eastern Idaho's vital habitats for us all to enjoy. From safeguarding wildlife corridors to restoring wetlands and supporting working farms, your generosity drives every effort we make to keep these landscapes thriving.

With your commitment, you ensure the long-term preservation of eastern Idaho's natural beauty and resources that we all cherish, now and for future generations.

Scan QR code to donate



208.354.8939 | TETONLANDTRUST.ORG

SIGN UP FOR OUR EMAIL NEWSLETTER ON OUR WEBSITE.



*Teton Regional Land Trust has been accredited by the Land Trust Alliance, meeting national standards for excellence, upholding the public trust, and ensuring that conservation efforts are permanent.*

A copy of the latest Financial Report and Registration filed by this organization may be obtained by contacting us at: PO Box 247, Driggs, ID 83422; (208) 354-8939  
Teton Regional Land Trust is a nonprofit, tax-exempt charitable organization under Section 501(c)(3) of the Internal Revenue Code. Donations are tax-deductible as allowed by law.

